

Model NO:

VS0601U

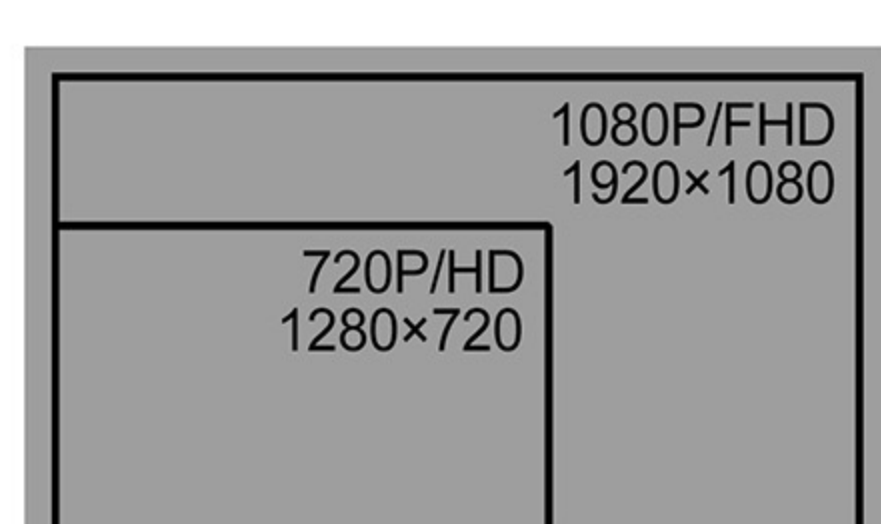
MINI 6 CHANNEL MULTI-FORMAT STREAMING SWITCHER



- ▶ Uncompressed capture for live streaming, comply with UVC & UAC
- ▶ 6 channel inputs: 4×SDI & 2×HDMI
- ▶ 1×USB type-C output, 2×SDI & 1×HDMI PGM outputs, 1×SDI & 1×HDMI multiview outputs
- ▶ 1×SDI AUX output, can be selected as PGM or PVW
- ▶ Multi-format input auto-detected and PGM outputs format selectable
- ▶ T-Bar/ AUTO/ CUT transitions
- ▶ Mix/ Fade/ Wipe transition effects
- ▶ PIP mode size and position adjustable
- ▶ Support audio MIXING and AFV mode
- ▶ GPIO for Tally, FTB for emergency

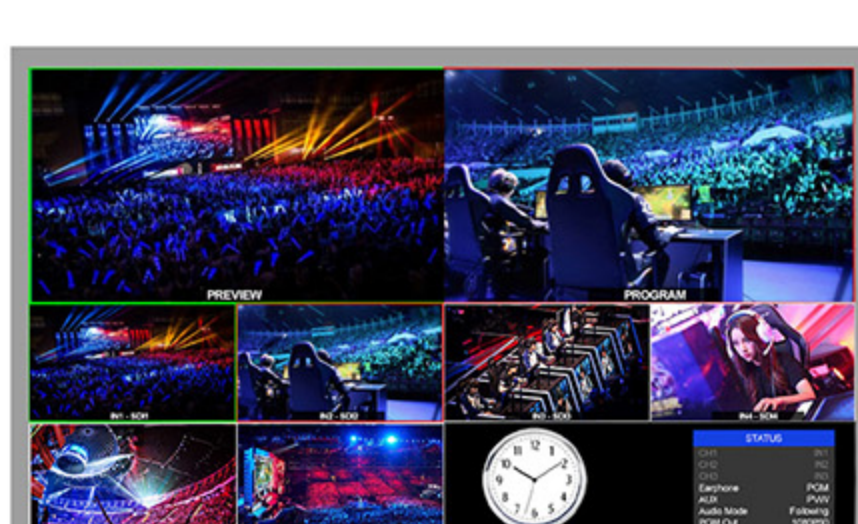
USB Capture For Streaming

The new VS0601U features with an added built-in USB Type-C output, when connecting with PC, it will work like a webcam for capturing uncompressed video and audio quality and streaming your production to various software and platform like Twitch, Youtube, Facebook LIVE, Zoom, etc. No driver needed, and compatible with Windows 7/8/10, Linux and MacOS.



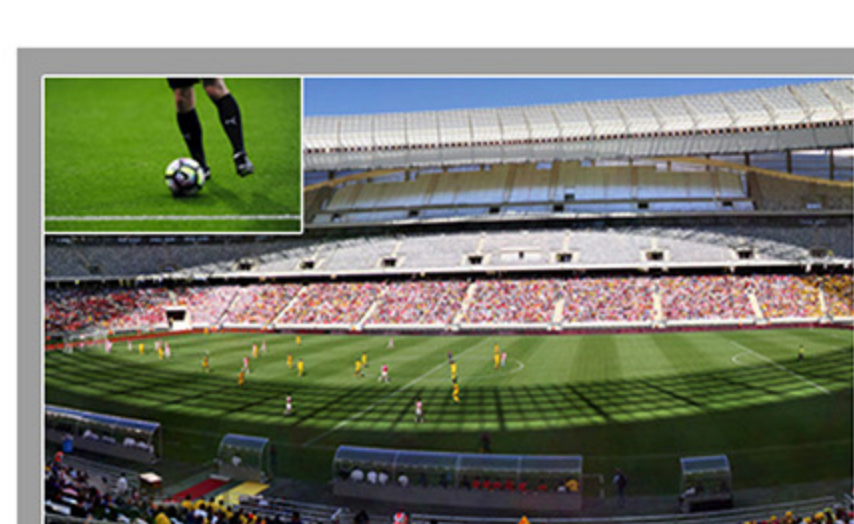
Multi-format & Scaler

Flexible to accept 6 input sources with different format and frame rate, with built-in scaler, PGM output can be scaled to 1080i and 1080p.



Multiview Monitoring

Multiview output make it easy to monitor 6 channels sources as well as PVW and PGM simultaneously on one display, besides, a clock and menu list are located in the lower right corner of the multiview.



PiP

To insert a second picture into/outside the main picture. Simply adjust its size and position, then apply to program.



Transition Effects

Transition between PVW and PGM with WIPE / MIX / FADE effect through T-Bar & AUTO.



Audio Mixer

A built-in audio mixer can mix 2 external stereo 3.5mm stereo & RCA audio and 6 channels of embedded audio.

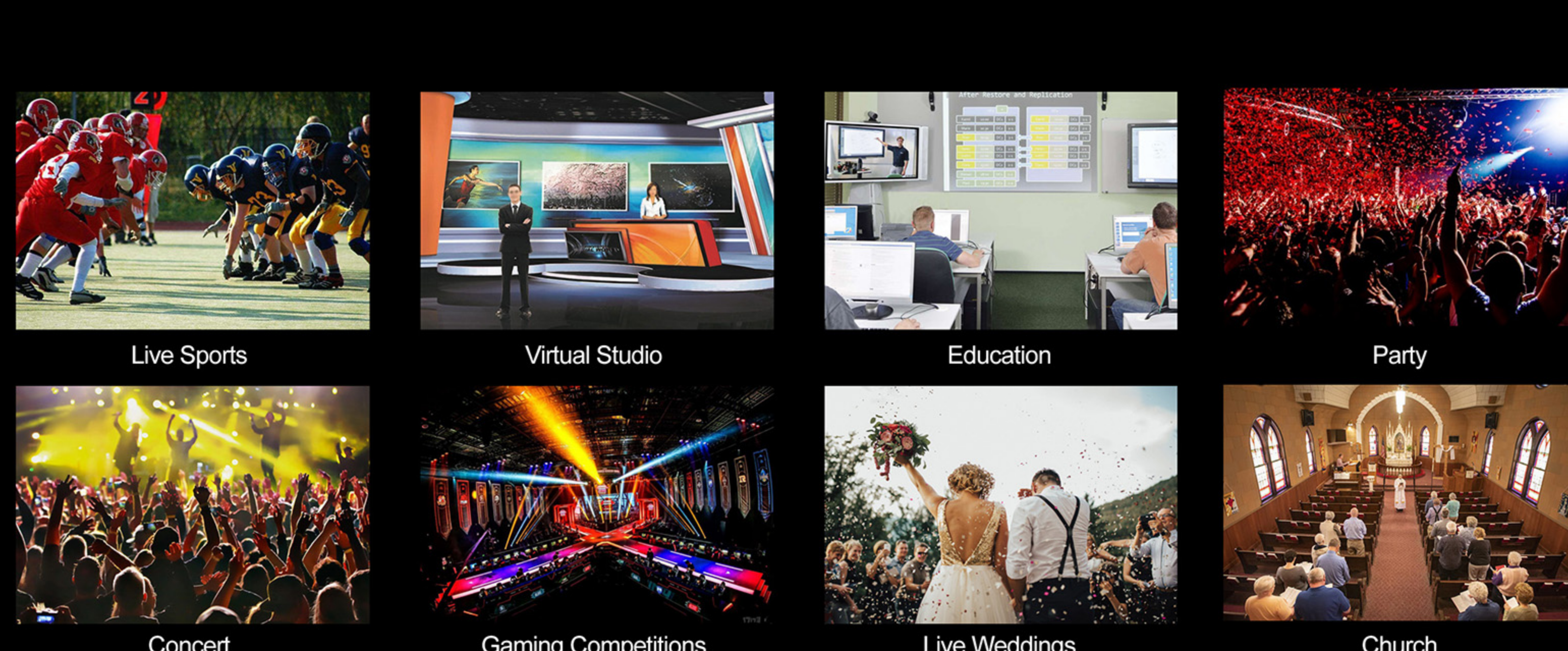


Portable Handbag

A total of 1.7kg including packing accessories, with a handbag, it is very portable and suitable for various applications.

Widespread Application

The all-in-one 6 channel video switcher can be widely used in various field events, such as live sports, virtual studio, education, church, internet, concert, and so on.



Super Compact Design

Outstanding metal case architectonics, with only 1.2kg weight. Convenient and suitable for the application of various occasions. 4×SDI and 2×HDMI inputs, 2×SDI & 1×HDMI PGM outputs, 1×SDI AUX output for PVW & PGM, USB Type-C 3.0 output, 1×SDI & 1×HDMI multiview output.

FUNCTIONS	Transitions & Effects	Manual T-bar/ AUTO/ CUT, Wipe/ Mix/ Fade/ FTB	
	Streaming	USB type-C uncompressed capture, Comply with UVC & UAC	
	Layouts	PIP/ Multiview	
INPUTS	Video Inputs	SD/HD/3G-SDI(75Ω)×4, HDMI type-A(100Ω)×2	
	Analog Audio Inputs	3.5mm stereo audio ×1, RCA(L/R)×1	
	PGM Outputs	HD/3G-SDI(75Ω)×2, HDMI type-A(100Ω)×1	
OUTPUTS	PGM Streaming Output	USB3.0 (type-C)×1	
	AUX (PVW/PGM) Output	HD/3G-SDI (75Ω)×1	
	Multiview Outputs	3G-SDI (75Ω)×1, HDMI type-A (100Ω)×1	
	Analog Audio Outputs	3.5mm stereo audio ×1, RCA (L/R)×1	
DATA INTERFACE	LAN	RJ45×1, Synchronize local time	
	Tally	DB-15×1	
STANDARDS	SDI Input Format Support	1080p 60/59.94/50/30/29.97/25/24/23.98 1080psF 30/29.97/25/24/23.98 1080i 60/59.94/50 720p 60/59.94/50/30/29.97/25/24/23.98 625i 50 PAL, 525i 59.94 NTSC	
	HDMI Input Format Support	1080p 60/59.94/50/30/29.97/25/24/23.98/23.976 1080i 50/59.94/60 720p 60/59.94/50/30/29.97/25/24/23.98 576i 50, 576p 50	
	PGM Output Format	1080p 60/59.94/50/30/29.97/25/24, 1080i 60/59.94/50	
	Multiview Output Format	1080p 60	
	SDI Compliance	SMPTE 292M/ SMPTE 259M/ SMPTE 424M	
	USB Capture	Compatible with USB3.0 and USB 2.0 up to 1080p60hz	
	SIZE	Dimension(LWD)	249.2 × 172.3 × 55mm
		Weight	1.2 kg
		Working Temp	Working Temp: -20~60°C, Storage Temp: -30~70°C
	POWER	Power Supply	DC 12V, 1.2A, 15W

